

Water Pump Series



Application:

- Use on liquid cooling system

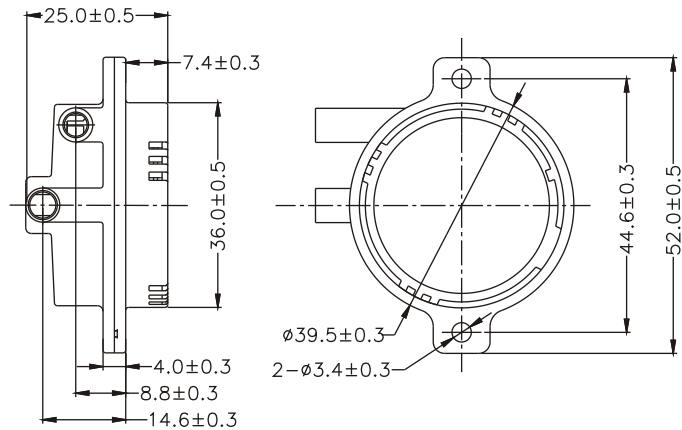
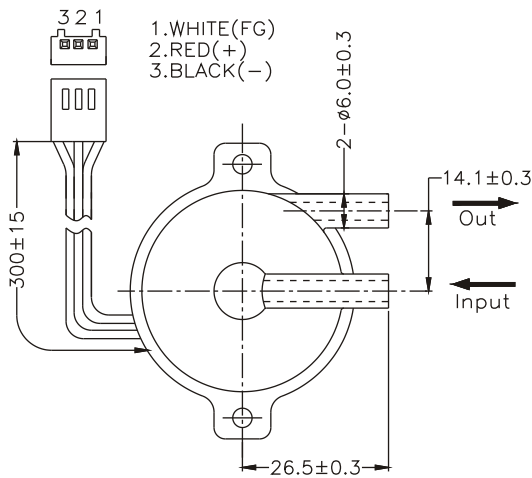
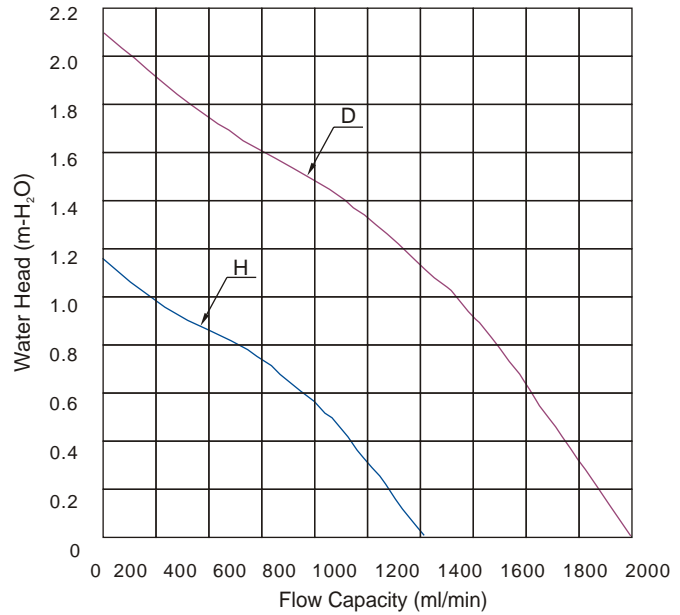
Features:

- Ceramic Shaft
- High Performance
- Mini Size
- Low Noise
- Low Vibration
- Long Life

Motor Protection:

- Reverse Polarity Protected
- Automatic Restart.

Parameter measure condition: pump is filled with pure water



Unit: mm

| Listed Model | Rated Voltage | Operation Voltage | Input Current | Speed | Flow Capacity | Water Head | Acoustical Noise | Operation Temperature | Weight |
|--------------|---------------|-------------------|---------------|-------|---------------|--------------------|------------------|-----------------------|--------|
| | VDC | VDC | A | RPM | ml/min | m-H ₂ O | dBA | °C | g |
| RDPC3625D12 | 12 | 7.0~13.5 | 0.45 | 3,600 | 2,000 | 2.2 | 30 | 0~70 | 43 |
| RDPC3625H12 | 12 | 6.0~13.8 | 0.30 | 2,600 | 1,200 | 1.1 | 25 | 0~70 | |

Notes: ©All readings are typical values at rated voltage.
 ©Specifications subjected to change without notice.