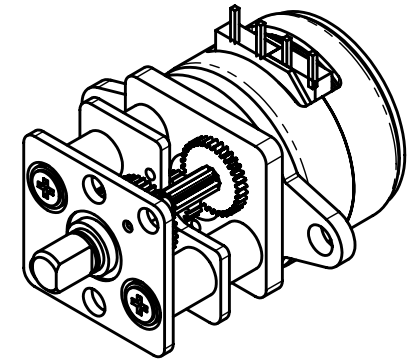
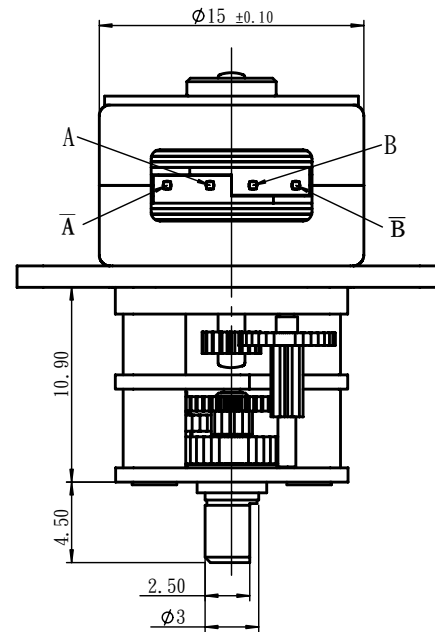
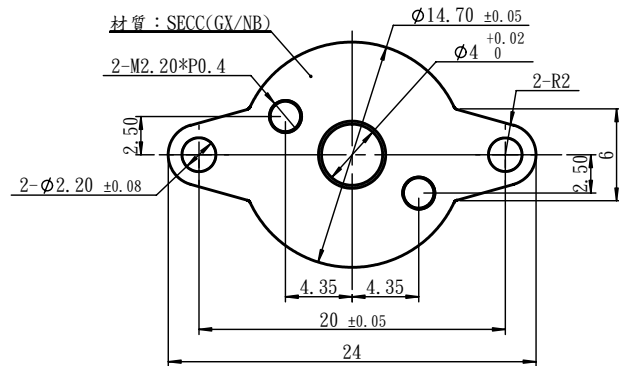


SEQUENCE OF EXCITATION

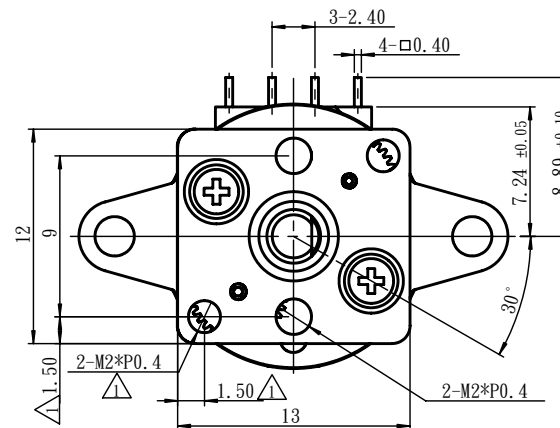
STEP PHASE	1	2	3	4
A	H	H	L	L
Ā	L	L	H	H
B	L	H	H	L
B̄	H	L	L	H

OUTPUT SHAFT ROTATION CW

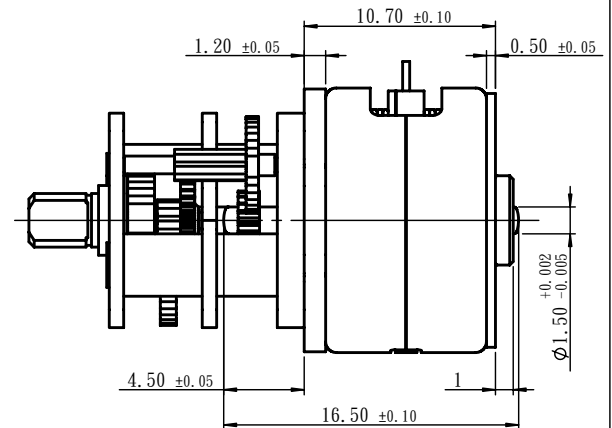


ELECTRICAL CHARACTERISTIC

- | | |
|---------------------------------|-------------------------------------|
| 1. RATED VOLTAGE | : 3.0 V DC |
| 2. COIL RESISTANCE | : 10 Ω ± 7 % |
| 3. WEIGHT | : 15.3 g |
| 4. NO. OF PHASES | : 2 PHASES |
| 5. STEP ANGLE | : 18° / STEP |
| 6. EXCITATION METHOD | : 2 PHASE EXCITATION BIPOLAR METHOD |
| 7. PULL-OUT TORQUE | : 220 gf-cm (MIN) (AT 500 pps) |
| 8. PULL-IN TORQUE | : 200 gf-cm (MIN) (AT 500 pps) |
| 9. MAX. SLEWING FREQUENCY | : 1500 pps (MIN) (NO LOAD) |
| 10. MAX. STARTING FREQUENCY | : 900 pps (MIN) (NO LOAD) |
| 11. INSULATION CLASS | : CLASS E FOR COILS |
| 12. INSULATION STRENGTH | : 200 V AC FOR ONE SECOND |
| 13. INSULATION RESISTANCE | : 100 MΩ (DC 200 V) |
| 14. OPERATING TEMPERATURE RANGE | : 0 ~ +55 °C |
| 15. GEAR SEPARATION FORCE | : 1 kg (MIN) |



(減速比1:35)



△ 減速器增加螺絲孔

序號

更 改 內 容

TRICORE

STEPPING MOTOR

GSM1502

T2

UNIT : MILLIMETERS