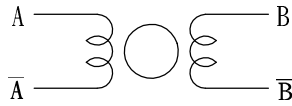


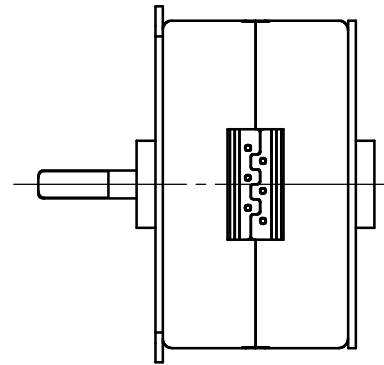
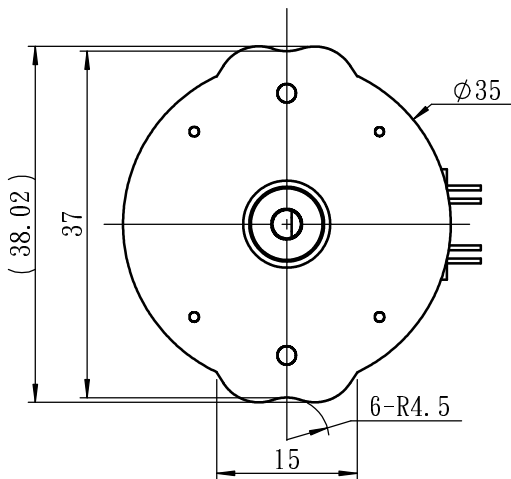
CONNECTION DIAGRAM



SEQUENCE OF EXCITATION

STEP PHASE	1	2	3	4
A	H	H	L	L
A	L	L	H	H
B	L	H	H	L
B	H	L	L	H

OUTPUT SHAFT ROTATION CW



ELECTRICAL CHARACTERISTIC

- | | |
|---------------------------------|-------------------------------------|
| 1. RATED VOLTAGE | : 12.8V DC(Range from 9V to 16V) |
| 2. COIL RESISTANCE | : 8 Ω ± 10 % |
| 3. NO. OF PHASES | : 2 PHASES |
| 4. STEP ANGLE | : 15° / STEP |
| 5. EXCITATION METHOD | : 2 PHASE EXCITATION BIPOLAR METHOD |
| 6. PULL-IN TORQUE | : 150 gf-cm (AT 300 PPS) |
| 7. MAX. SLEWING FREQUENCY | : 470 pps (MIN) (NO LOAD) |
| 8. MAX. STARTING FREQUENCY | : 450 pps (MIN) (NO LOAD) |
| 9. INSULATION CLASS | : CLASS H FOR COILS(180 °C) |
| 10. INSULATION STRENGTH | : 200 V AC FOR ONE SECOND |
| 11. INSULATION RESISTANCE | : 1 MΩ (DC 500 V) |
| 12. OPERATING TEMPERATURE RANGE | : -40°C ~ 100 °C |
| 13. STORAGE TEMPERATURE RANGE | : -40°C ~ 120 °C |

序號

變更內容

 TRICORE

STEPPING MOTOR

SM3505


T1

UNIT : MILLIMETERS